

scottish  
ensemble

2024

2025



# Meet Scottish Ensemble

We are a pioneering collective of musicians who champion music for strings. We explore the power and breadth of musical experience, performing across Scotland and further afield. Collaborating with creative minds, we blur the boundaries between genres and artforms.

Come and say hello to us at our events and follow our social media channels for an insight into our work. You can also contact us using the details on the back cover of this brochure.

## Violin



Jonathan Morton



Cheryl Crockett



Laura Ghire



Joanne Green



Tristan Gurney



Liza Johnson

## Viola



Jane Atkins



Andrew Berridge



Alison Lawrance



Naomi Pavri



Diane Clark

## Cello

## Double Bass

### Strings Attached

Join our community of friends to support our work on stage and off. Strings Attached offers you the chance to get to know our musicians a little better and access behind-the-scenes news and experiences.

The generous support of people like you enables us to continue to deliver high-quality performances, and develop our educational and wellbeing sessions with communities across Scotland.

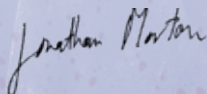
Join from just **£30 a year** - find out more on our website.



# Welcome

We are thrilled to share the details of our 2024-25 Season. As always, with Scottish Ensemble you can expect some familiar patterns, but also new ideas and collaborations as we explore a fresh take on Baroque songs with Héloïse Werner and navigate our next cross-artform journey with master puppeteers, Blind Summit. Finding the sweet spot between tradition and experimentation is something we strive for in all our projects, keeping us on our toes in an ever-evolving world.

We hope you can join us! Whether it be on a tour up to the Highlands, or as we head south to open the Southbank Centre's Classical Season in London, we hugely appreciate your continued support.



Jonathan Morton, Artistic Director

## **Alison Lawrance (cello)**

Our first major cross-artform collaboration with Andersson Dance made us realise how much more we could do visually if we memorise the music. We can be anywhere on the stage, moving or standing still (my preference as a cellist!), and interact with each other much more. I'm excited to see what discoveries come from our next cross-artform project with puppetry company Blind Summit. (see page 6)

## **Andrew Berridge (viola)**

I'm hugely excited to curate our chamber tour, Resound this September; a guided listening experience with a range of amazing quartet works from across the centuries. We're incorporating an audience feedback element too which I always find insightful and informative (hopefully you do too!). (see page 4)

## **Tristan Gurney (violin)**

I particularly look forward to our week with the Young Artists at the RCS. It falls in January, and is such a positive and invigorating start to the New Year! There's a real sense of a journey through the week, culminating in a powerful performance which encapsulates the bristling enthusiasm and heart-felt music making. (see page 10)

## **Diane Clark (double bass)**

Working with Donald Grant is a total joy! His depth of knowledge and connection with Scottish traditional music combined with his unending enthusiasm and amazing musicianship will make for a unique musical experience. (see page 7)



## Resound

**A journey through five centuries of mind-expanding music.**

Music affects us on a profound level, it has the ability to transport and inspire but also to release and heal. Join Scottish Ensemble's violist Andrew Berridge and a quartet of musicians to explore the familiar and the new in this intimate listening experience, revealing the full potential of what live music can do for us. With works by Johannes Brahms, Ludwig van Beethoven, Edmund Finnis, Caroline Shaw and Dobrinka Tabakova, this programme is firmly rooted in Scottish Ensemble's belief that music can lift spirits and strengthen connections.

A 70 minute performance plus post-concert discussion to include...

**Fredrik Sjölin, Danish String Quartet** Shore

**Edmund Finnis** Hymn (after Byrd)

**Johannes Brahms** String Quartet No. 2 in A minor

**Caroline Shaw** Valencia

**Dobrinka Tabakova** The Smile of the Flamboyant Wings

**Ludwig van Beethoven** String Quartet No. 11 in F minor

**Cristóbal de Morales** Parce Mihi Domine

**Thu 5 Sep, 7pm**

Whiting Bay Hall, Arran

**Fri 6 Sep, 8pm**

Kirkcudbright Parish Church

**Mon 9 Sep, 12.45pm**

Perth Concert Hall

**Tue 10 Sep, 7pm**

Mull Theatre, Tobermory

**Wed 11 Sep, 7pm**

Seil Island Community Hall

**Thu 12 Sep, 7pm**

Adelaide Place, Glasgow

**Tickets £8-£15**





## Concerts by Candlelight

**Ignite your soul during the winter chill.**

In the depths of winter warm your soul and explore a rich selection of music, which weaves between past and present, combining seamlessly to create a beautiful sonic tapestry, in some of Scotland's most atmospheric settings.

Our annual Concerts by Candlelight tour offers moments of stillness, contemplation and a captivating musical adventure.

A 75 minute performance to include...

**Hannah Kendall** new work (world premiere)  
And works by **Johann Sebastian Bach**, **Pēteris Vasks**,  
**Arvo Pärt**, **Johannes Brahms** and **Erkki-Sven Tüür**

**Thu 5 Dec, 7pm**  
St John's Kirk, Perth

**Fri 6 Dec, 7pm**  
Inverness Cathedral

**Sat 7 Dec, 7pm**  
St Machar's Cathedral,  
Aberdeen

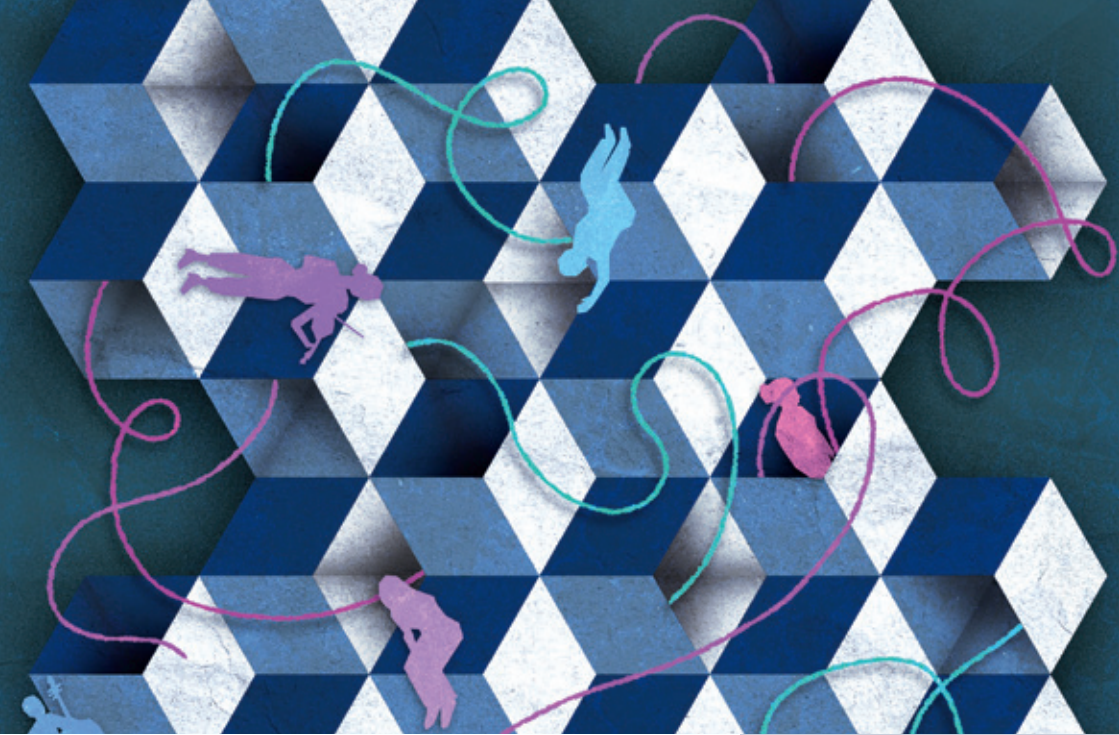
**Mon 9 Dec, 7.30pm**  
St Mary's Parish Church,  
Dundee

**Tue 10 Dec, 7.30pm**  
Greyfriars Kirk,  
Edinburgh

**Wed 11 Dec, 7.30pm**  
Kelvingrove Art Gallery  
and Museum, Glasgow

**Thu 12 Dec, 7.30pm**  
Dunblane Cathedral

**Tickets £11-£22**



# The Law of Gravity

**What is seen and not seen?**

**Who is a puppet and who is a musician?**

What can puppetry reveal about music? In a new collaboration with master puppeteer Mark Down and his team at Blind Summit, musicians and puppeteers come together to blend sound and visuals, exploring the abstract and the real.

Through the romance of Schoenberg's Transfigured Night and its hope for the future, and the mesmerising modern world of Philip Glass, music will breathe life into the puppet. And the puppet, the ideal dancer not bound by the same physical laws as us, will fleetingly reveal to you the composers' intentions, their ambitions and their ideas.

A 65 minute performance to include...

**Arnold Schoenberg** Verklärte Night (Transfigured Night)

**Philip Glass** Symphony No. 3

**Feb - date to be announced**  
Edinburgh

**Fri 14 Feb, 7.30pm**  
Dundee Rep

**Sat 15 Feb, 7.30pm**  
Glasgow Royal Concert Hall, New Auditorium

**Tickets £11-£22**

**Blind Summit** are a cohort of puppet makers and puppeteers, who have contributed to the creation of some of the most extraordinary spectacles of recent years: from the giant storybook characters in the opening ceremony of London's 2012 Olympic Games to the critically acclaimed productions **War Horse** and **Pinocchio** at the National Theatre, they consistently subvert people's expectations of puppetry.



## Thuit an Oidhche Oirnn

**Scottish fiddle player Donald Grant and friends join Scottish Ensemble to revel in the joy of making music together.**

Donald Grant grew up immersed in traditional music in a small village in the Highlands, and it was here that he realised his passion for gathering with others to share a love of music-making.

Following a memorable performance during Celtic Connections 2024, Donald joins our musicians once again for an evening of friendship and musical storytelling. Featuring traditional and contemporary string music that bridges genres and tells of life in the Highlands through Donald's new work Thuit an Oidhche Oirnn (The Night Overtook Us).

A 120 minute performance, including interval, to include...  
**Donald Grant** Thuit an Oidhche Oirnn (The Night Overtook Us)

And music by **James MacMillan**, **Samantha Fernando** and **Martin Suckling**

**Sun 13 Apr, 7.30pm**  
Queen's Hall, Edinburgh

**Mon 14 Apr, 7pm**  
Eden Court, Inverness

**Tue 15 Apr, 7.30pm**  
Aberdeen Music Hall

**Wed 16 Apr, 7.30pm**  
Universal Hall, Findhorn

**Tickets £11-£22**





# Concerts for a Summer's Night

## Words and music take flight.

Our annual summer concerts bring vibrant music to open, light-filled venues across Scotland. In 2025 we are joined by singer and composer Héloïse Werner - “a soprano of extraordinary range, tone and vocal abilities, possessing a seemingly inexhaustible expressive range” (Gramophone).

Héloïse’s vocals and our musicians’ playing will meld to create a bright and vivid sound world that will take listeners on an odyssey through beautifully evocative arrangements of Baroque songs to Héloïse’s own dramatic and playful works.

A 75 minute performance to include...  
music by **Barbara Strozzi**, **Julie Pinel**, **Errollyn Wallen**  
and **Héloïse Werner**

**Mon 9 Jun, 8pm**  
Rossie Byre, Perthshire

**Tue 10 Jun, 8pm**  
Strathpeffer Pavilion

**Wed 11 Jun, 8pm**  
Aberdeen Art Gallery

**Fri 13 Jun, 8pm**  
Kelvingrove Art Gallery  
and Museum, Glasgow

**Sat 14 Jun, 8pm**  
National Museum of  
Scotland, Edinburgh

**Mon 16 Jun, 8pm**  
V&A Dundee

**Tickets £11-£22**





*Scottish Ensemble*

# Elsewhere

**22 September 2024**

## **Sonica at the Burrell Collection**

A fusion of sound and space, with a new collaboration between Scottish Ensemble and Cryptic. In a carefully curated performance by our principal violist Jane Atkins, the programme traverses ancient and contemporary melodies inspired by the exhibits and architecture of the Burrell Collection.

**29 September 2024**

## **Philip Glass Symphony No. 3**

**Queen Elizabeth Hall, Southbank Centre, London**

Playing music that will excite, surprise and challenge, we'll be performing at the Southbank Centre's 2024-5 season opening weekend. In a dynamic playlist-style programme, we will take listeners on a journey that explores new musical paths and connections, before arriving at a performance of Philip Glass' meditative Symphony No. 3.

**17 January 2025**

## **Fridays at One: Lunchtime concert**

**Royal Conservatoire of Scotland, Glasgow**

A side-by-side performance with young string players training at RCS, following a week-long residency as part of our Young Artists programme (see page 10).

**17 November 2024 & 26 January 2025**

## **in Sync**

**St Mary's in the Lace Market, Nottingham and Southbank Centre, London**

Our collaboration with MishMash Productions heads to England. in Sync is an energetic and interactive performance for all the family. Alongside a tour of schools, performances also take place in London and as part of the Nottingham Chamber Music Festival.

For booking information and other events throughout the season visit [scottishensemble.co.uk](http://scottishensemble.co.uk)



*Scottish Ensemble*

# Young Artists

Helping to train the next generation of string players our Young Artists programme, in partnership with the Royal Conservatoire of Scotland, supports talented young musicians. During a week-long residency at the RCS in January 2024, our musicians rehearsed and performed alongside an ensemble of students. Two musicians, Rebekah Lesan (cello) and George Hillier (viola), were selected to join our 2024-25 Young Artists programme.

During the year, the Young Artists will attend rehearsals, observe and participate in our Music for Wellbeing programme, meet with our office team to experience what goes on behind the scenes, and perform with us on one of our Scottish tours.







## *Re-imagining music* **for the screen**

Whether you can join us at a live performance or not, you can enjoy our music-making through our digital projects wherever you are.

Now available online are two new visually striking music videos, Anna Meredith's Tull and Dmitri Shostakovich's Chamber Symphony, produced in partnership with Forest of Black.

Both videos present a fresh and distinctive creative perspective on the music, and are available to watch at any time via our YouTube channel.

Keep an eye on our website and social channels for news of exciting new digital projects and exclusive live-streamed content.



# Music for Wellbeing



Scottish Ensemble believes that music has the power to improve wellbeing. Our **Music for Wellbeing** sessions combine live music with guided listening and techniques to use music in your day-to-day life. The aim: to help people find a moment of calm, combat stress and anxiety, and lift their mood.

This year we will continue our long-running collaboration with Maggie's, which supports people whose lives have been affected by cancer. We will strengthen our partnerships with schools across Scotland to support young people managing the transition to secondary school and facing exam stress. We will deepen partnerships in Glasgow with organisations supporting New Scots as they adapt to life in Scotland.

Music for Wellbeing is increasingly fundamental to how we think about our performances inside the concert hall: we will be touring Scotland with Resound (see page 4), an immersive deep listening experience that will give audiences a new perspective on live music and how it affects their wellbeing.

This area of our work is growing. Interested in arranging a Music for Wellbeing session for your school, business or community group? Get in touch with Anne, our Wellbeing Programme Manager, at [anne.tavendale@scottishensemble.co.uk](mailto:anne.tavendale@scottishensemble.co.uk) to learn more about what our Music for Wellbeing sessions can do for you and your community.



# Our Supporters

## Funders

Creative Scotland  
Glasgow City Council  
Glasgow City of Music  
Aberdeen City Council  
Leisure & Culture Dundee

## Trusts & Foundations

Alexander Moncur Charitable Trust  
Hope Scott Trust  
Hugh Fraser Foundation  
Inchrye Trust  
Jennie S Gordon Memorial Foundation  
Leng Charitable Trust  
Mary Janet King Trust (FS Small Grants), administered by Foundation Scotland  
McGlashan Charitable Trust  
Murdoch Forrest Charitable Trust  
Nancie Massey Charitable Trust  
Penpont Trust  
RJ Larg Family Trust  
RPS Audience Fund in Association with the Rachel Baker Memorial Charity  
The Gannochy Trust  
The D'Oyly Carte Charitable Trust  
The Kells Trust  
The Lang Foundation  
The Leach Family Trust  
The Michael Marks Charitable Trust  
The Northwood Charitable Trust  
The Russell Trust  
William S Phillips Fund

## Strings Attached Circle

Anonymous  
Sheila Colvin  
Fabienne Harrison  
Andrew Pringle

## Strings Attached Partners

Anonymous  
Campbell Armour & Angus McLeod

Jeff & Emily Fergus  
Graham & Elma Leisk  
Dougald Middleton

## Strings Attached Associates

Anonymous  
Carola Bronte-Stewart  
The Right. Hon. Lord Matthew Clarke  
Ian & Irene Dickson  
Neil & Alison Kelly  
Alison Lawson  
Janet & Murdo MacDonald  
Lesley Paterson in memory of Simon  
Seona Reid  
Alison Wyllie

## Strings Attached Fellows

Anonymous  
Gordon Adam  
Fraser Anderson  
Peter Armit  
Dale Bilsland  
Professors Ian & Nuala Booth  
Margaret Bremner  
Roderick & Patricia Brodie  
Anna & Stephen Brooke  
Colin Brown  
Morag Burnett  
Dougald Campbell  
Georgina Clark  
Dr Joe Coleiro  
Linsay & Graeme Colville  
Freddie & Michael Dale  
Lea & Adrian De Villiers  
Thorben Dittes  
James & Ann Friend  
Robert Fleming & Ellen Thomson  
Ken Forbes & Margaret Gibson  
Pete Fozard  
Donald Fraser  
Donald & Alison Gordon  
Stuart Goudie & Caron Anderson  
Jenny Jamison

Alasdair Iain Johnston  
Alison Lawrance  
Cathy Lawrance  
Janet MacDonald  
Joan MacDonald  
Neil Metcalfe & Pat Monaghan  
Colin & Valerie Miller  
Alan Moat  
Margaret Moss  
Clare Munn  
William Norris  
Christina Paulson-Ellis  
Euan Petrie  
Roy & Sue Rampling  
Erica Rigg  
Irene & Fred Shedden  
Bill & Linda Stephens  
Alastair Stewart  
Magnus & Alayne Swanson  
Simon Taylor  
Anne Thom  
Mr C.S. Turnbull  
Scott Turnbull  
William & Carolyn Walker  
Lesley Watt  
Amy Woodhouse

*plus the Strings Attached Friends*

## Legacies

Anonymous  
Eileen Cochrane  
Joe Coleiro  
Iain Currie  
L. B. Currie  
Alasdair Fraser  
Iain McGlashan  
Margaret McLeod  
Eric Young Stevenson

## Patrons

Marina, The Lady Marks  
Lord Vallance of Tummel



# How to Book

## Concessions

We offer concessions to the following groups at all of our concerts: Students, Under 30s, and those in receipt of disability or unemployment benefits and are unwaged. Free companion tickets are available with any disability discount ticket booking.

## Children go free!

Children under 16 go free to any of our events. Our under 16 tickets extends to School Groups, including tickets for teachers! Contact us for any group bookings.

## Season Discounts

Book more than one concert and save 15% on your whole order. Book two or more events in any one city and the discount will automatically be applied by our box office partner in your city.

## Accessibility

We're committed to making our events as inclusive as possible. Venue accessibility guides and performance lengths are indicated on event pages on our website. If you have any questions regarding accessibility or support with attending one of our concerts, please get in contact at office@scottishensemble.co.uk, call us on 0141 332 4747, or contact us via our social media pages.

## Stay in Touch

Join our mailing list to receive all the latest news on Scottish Ensemble events and tours – including performances which may be added after this brochure goes to print. We won't send you more than 2 to 3 emails a month, and you can unsubscribe at any time. Visit our website to join.

### Aberdeen – all venues

aberdeenperformingarts.com  
01224 641 122

### Arran – Whiting Bay Hall

scottishensemble.co.uk  
0141 332 4747

### Dumfries – Kirkcudbright Parish Church

kbtfringe.co.uk

### Dundee – all venues

dundeerep.co.uk  
01382 223530

### Dunblane – Cathedral

scottishensemble.co.uk  
0141 332 4747

### Edinburgh – all venues

thequeenshall.net  
0131 668 2019

### Findhorn – Universal Hall

universalhall.co.uk

### Glasgow – all venues

rca.ac.uk/boxoffice  
0141 332 5057

### Inverness – all venues

eden-court.co.uk  
01463 234234

### Mull – An Tobar and Mull Theatre

antobarandmulltheatre.co.uk  
01688 302211

### Perth – all venues

perttheatreandconcerthall.com  
01738 621 031

### Seil – Community Hall

scottishensemble.co.uk  
0141 332 4747



# Concert Diary

## Scottish Ensemble in your area

<b>Aberdeen</b>	7 Dec 2024	Concerts by Candlelight	p5
	15 Apr 2025	Thuit an Oidhche Oirnn	p7
	11 Jun 2025	Concerts for a Summer's Night	p8
<hr/>			
<b>Dundee</b>	9 Dec 2024	Concerts by Candlelight	p5
	14 Feb 2025	The Law of Gravity	p6
	16 Jun 2025	Concerts for a Summer's Night	p8
<hr/>			
<b>Edinburgh</b>	10 Dec 2024	Concerts by Candlelight	p5
	TBC Feb 2025	The Law of Gravity	p6
	13 Apr 2025	Thuit an Oidhche Oirnn	p7
	14 Jun 2025	Concerts for a Summer's Night	p8
<hr/>			
<b>Glasgow</b>	12 Sep 2024	Resound	p4
	11 Dec 2024	Concerts by Candlelight	p5
	15 Feb 2025	The Law of Gravity	p6
	13 Jun 2025	Concerts for a Summer's Night	p8
<hr/>			
<b>Inverness</b>	6 Dec 2024	Concerts by Candlelight	p5
	14 Apr 2025	Thuit an Oidhche Oirnn	p7
	10 Jun 2025	Concerts for a Summer's Night*	p8
<hr/>			
<b>Perth</b>	9 Sep 2024	Resound	p4
	5 Dec 2024	Concerts by Candlelight	p5
	9 Jun 2025	Concerts for a Summer's Night**	p8

\*Concert takes place at Strathpeffer Pavilion, 21 miles from Inverness

\*\*Concert takes place at Rossie Byre, Perthshire, 8 miles from Perth

Free coach travel is available from Perth and Inverness for these performances, bookable with your ticket.

## Scottish Ensemble

Centre for Contemporary Arts  
350 Sauchiehall Street  
Glasgow G2 3JD

office@scottishensemble.co.uk  
0141 332 4747



scottishensemble.co.uk



ScottishEnsemble



ScotEnsemble



scottishensemblestrings