

2020

NORTH EDINBURGH ARTS



celebrating our creative community

north
edinburgh
arts

urban
union



North Edinburgh Arts offers local residents a place to relax, explore, learn, meet, share, volunteer and have fun in. Last year over 34,000 visits were made to the venue.

Over 30 hours of creative workshops are on offer each week, most with a family focus, alongside a wide range of other events to include exhibitions, dance shows, circus skills workshops, community theatre, poetry readings and film clubs. The venue is also home to Muirhouse Link Up and Tinderbox Orchestra who are working and connecting creatively with young people, families and adults living across the area.

Our award winning venue incorporates two studios, a 96 seat theatre, recording studio, gallery, offices and a café with children's play area leading onto a large garden. NEA offers a safe, comfortable and creative space for people of all ages to develop within, in what can otherwise be a harsh physical and social environment.

Major grants from the Big Lottery Fund allowed us to create our own magic garden; a place to create, recycle, try out new ideas, grow, read, rest and play. Tying in with the major physical redevelopments happening in the square mile around the venue we aim to keep NEA at the centre of a happy, healthy, kind, creative, inspired and inspiring community.

The Shed is a place where people can come to either make stuff or mend stuff. We have a fine array of tools you can use on site and a good selection of wood which you are welcome to help yourself to, to enable you build whatever it is that you wish to make. Staff are on hand to support you make what you want to make.

As it says on the path to our door Art is:

*Breaking down barriers; transformation,
growth; freedom of thought.*

Open Monday to Friday all day, plus regular evenings
and Saturday mornings for events and workshops.

North Edinburgh Arts 15a Pennywell Court Edinburgh EH4 4TZ
0131 315 2151 admin@northedinburgharts.co.uk www.northedinburgharts.co.uk

All proceeds from the sale of this calendar will be used to resource the Artists' Studios at North Edinburgh Arts which need new materials, easels, furniture and fund a programme of Art activities and events.



Transfixed; ACRYLIC ON CANVAS; 50 x 70cm



ALAN LENNON

Alan is a multi-disciplinary artist exploring the contemporary figure. He is continually fascinated and inspired by the human form; drawing upon feelings of isolation and alienation, people connecting or not connecting.

The strong exterior forms of his paintings and sculptures often unmask the soft vulnerability that lies beneath.

Alan has also worked for many years helping North Edinburgh organisations in his other role as Graphic Designer.

www.lennon-art.co.uk

January 2020

MONDAY	TUESDAY	WEDNESDAY	THURSDAY	FRIDAY	SATURDAY	SUNDAY
30	31	1 <small>New Year's Day</small>	2	3	4	5
6	7	8	9	10	11	12
13	14	15	16	17	18	19
20	21	22	23	24	25 <small>Burns Night</small>	26
27	28	29	30	31		



Setting Sun Over Sea from Granton; OIL ON BOARD; 90 x 62cm



STEVEN HOOD

This painting is part of an ongoing series of landscapes produced from the same location at Granton, overlooking the Forth at varying times of the day and year.

North Edinburgh created a calendar 20 yrs ago and Steven was one of the original participants.

steven.e.hood@gmail.com

February 2020

MONDAY	TUESDAY	WEDNESDAY	THURSDAY	FRIDAY	SATURDAY	SUNDAY
27	28	29	30	31	1	2
3	4	5	6	7	8	9
10	11	12	13	14	15	16
17	18	19	20	21	22	23
24	25	26	27	28	29	



Henry Raeburn Painted Himself; ACRYLIC, GOUACHE, COLLAGE ON PAPER



TREVOR DAVIES

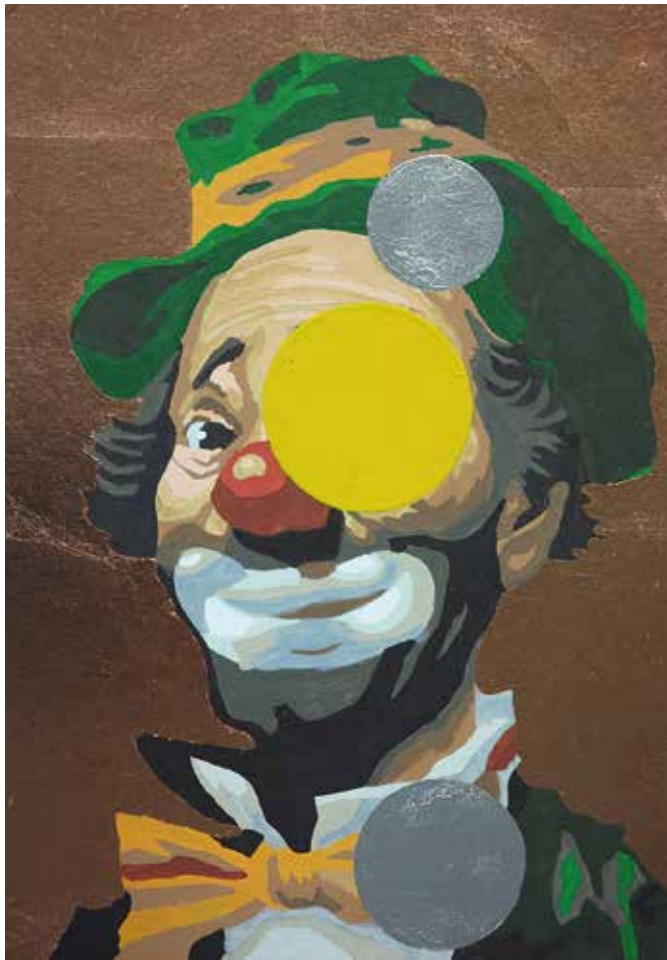
This is a small painting about art and Edinburgh. It is also, perhaps, about time, layers of time and perception. Henry Raeburn, one of our city's greatest painters, made this self-portrait.

My work seems to be about finding a way to keep hold of the often fleeting, sometimes lasting human presence, to suggest a sense of what lies behind, before and beyond. I look at objects we use and discard, the monuments we create for ourselves - from sandpaper to old bowls, a page fallen from a book to a stone carving. And the paintings of great artists.

www.trevor-davies.art

March 2020

MONDAY	TUESDAY	WEDNESDAY	THURSDAY	FRIDAY	SATURDAY	SUNDAY
24	25	26	27	28	29	1
2	3	4	5	6	7	8
9	10	11	12	13	14	15
16	17	18	19	20	21	22
23	24	25	26	27	28	29
30	31					



Rileyville, Virginia. (1962/2015);

Appropriated and altered mid century painting by numbers
 FOUND PAINTING, COPPER LEAF, ENAMEL PAINT 350 x 450mm



Hans K. Clausen

Hans K Clausen is an alumni of Leith School of Art and a sculpture graduate of Edinburgh College of Art. On graduating in 2012 he received an Edinburgh Sculpture Workshop (ESW) new graduate award and won London's Degree Art prize for Sculpture. He is a practising artist, a studio holder at ESW and has a strong commitment to collaborative and socially engaged art. He was resident artist at North Edinburgh Arts from 2015 – 2018 where amongst other projects he created The People's Museum of Memory and Myth for the Pennywell All Care Centre. He is a Teaching Fellow at University of Edinburgh's Centre for Open Learning and the Community Artist at St Columba's Hospice.

www.hansklausen.com

April 2020

MONDAY	TUESDAY	WEDNESDAY	THURSDAY	FRIDAY	SATURDAY	SUNDAY
30	31	1	2	3	4	5
6	7	8	9	10	11	12
13	14	15	16	17	18	19
20	21	22	23	24	25	26
27	28	29	30			



Arrival of The Smart Meters; SCREENPRINT; 59 x 42cm



PETER BLAKE

Sir Peter Blake has donated this signed screenprint to North Edinburgh Arts. Best known for co-creating the sleeve design for the Beatles' album Sgt. Pepper's Lonely Hearts Club, this work is about the introduction of smart meters into our homes. Sir Peter who during the 1950s became one of the best known British pop artists, finds inspiration in everyday objects. He said: *"In this case the smart meters suggested little bodies to me, so I turned them into people, symbolising the installers who are fitting the meters into every home in Great Britain"*.

May 2020

MONDAY	TUESDAY	WEDNESDAY	THURSDAY	FRIDAY	SATURDAY	SUNDAY
27	28	29	30	1	2	3
4	5	6	7	8	9	10
11	12	13	14	15	16	17
18	19	20	21	22	23	24
25	26	27	28	29	30	31



Operatic; OIL AND CRAYON ON CARD; 30 x 34cm



INGRID NILSSON

My paintings usually begin with an idea or character in my head. I then use observational drawings together with other details, paint and pattern to bring together the piece on the canvas. I have always just loved paint, pencil and the process of learning what can be done with them.

I studied art and photography at college and have always painted to some degree; in 2011 myself and my partner opened gallery/cafe Bon Papillon, where I work in a studio behind the cafe on my own work and commissions.

www.ingridnilsson.co.uk
bonpapillon15@gmail.com

June 2020

MONDAY	TUESDAY	WEDNESDAY	THURSDAY	FRIDAY	SATURDAY	SUNDAY
1	2	3	4	5	6	7
8	9	10	11	12	13	14
15	16	17	18	19	20	21
22	23	24	25	26	27	28
29	30					



TIM COTTEE

T Cottee is a Scottish based graphic artist who combines text and story with the beauty and nature of the countryside; creating 'a Different Type of Art'.

Work is inspired by Scotland's diverse landscapes and a love of outdoors and all things wild. Type is used to 'paint' a stunningly original image, whilst providing information, stories and narratives to create an informative and beautiful image.

The 'Nature's Peace' art work pays tribute to the beautiful Brown Hare and the wild place it lives. It is comprised of text quotations by one of Scotland's best exports and protector of wild spaces the legendary John Muir.

Tim is a former pupil of Broughton High School.

www.tcotteeart.com

tim@tcotteeart.com

Nature's Peace; DIGITAL MIXED MEDIA; 400x400mm

July 2020

MONDAY	TUESDAY	WEDNESDAY	THURSDAY	FRIDAY	SATURDAY	SUNDAY
29	30	1	2	3	4	5
6	7	8	9	10	11	12
13	14	15	16	17	18	19
20	21	22	23	24	25	26
27	28	29	30	31		



Woman with Parrot; OIL ON BOARD; 60 x 85cm



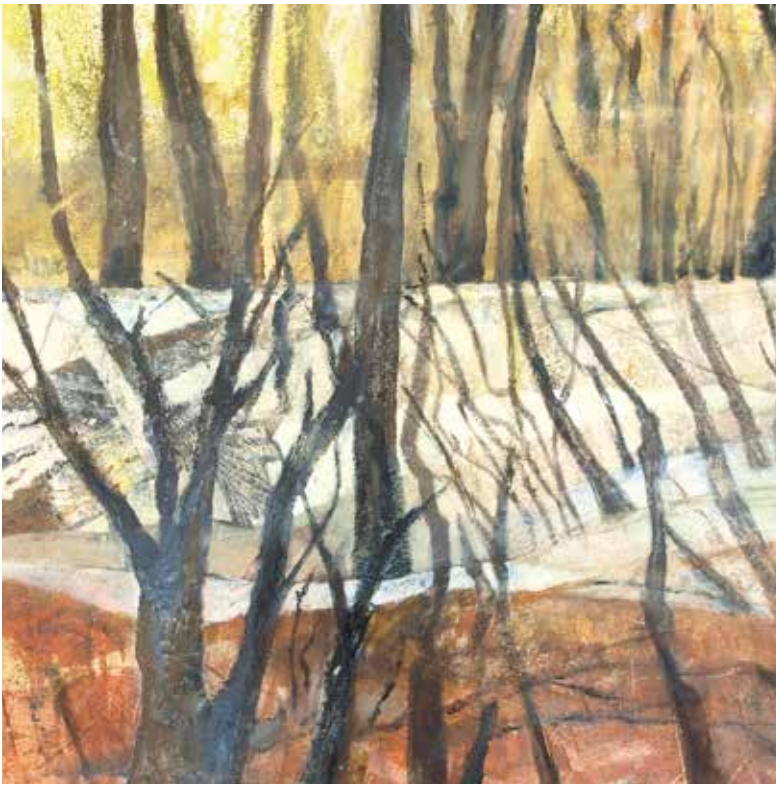
JOYCE GUNN CAIRNS

I have lived in West Pilton for 40 years, initially as a member of the West Pilton Circus Christian Community. My arrival in West Pilton coincided with Craigroyston High School gaining Community School Status with the offer of childcare, thus enabling me to sit for Higher Art. I went on from there to ECA in 1983. I have been exhibiting regularly since graduating. My work is currently on exhibit in six locations in Scotland and England. I have drawings and paintings in the collections of the Scottish National Portrait Gallery, the National Gallery of Dublin, and in several universities. *Woman with Parrot* highlights my concern for wildlife and my desire to honour our relationship with the environment.

www.joycegunncairnsartist.co.uk

August 2020

MONDAY	TUESDAY	WEDNESDAY	THURSDAY	FRIDAY	SATURDAY	SUNDAY
27	28	29	30	31	1	2
3	4	5	6	7	8	9
10	11	12	13	14	15	16
17	18	19	20	21	22	23
24	25	26	27	28	29	30
31						



Tree Shadows; ACRYLIC; 48 x 48cm



RUTH THOMAS

Ruth is an Australian artist who graduated from Edinburgh College of Art in 2014 with a BA in Combined Studies (Art and Design). She has lived just outside Edinburgh for over thirty years. She also has a home on the South Coast of NSW and the inspiration for her artwork is drawn from both these contrasting natural environments. Ruth has won several prizes from the Royal Scottish Society of Painters in Watercolour: the Student Prize in January 2015, the John Gray Award in December 2015 and the Turcan Connell Prize in January 2017. In 2019, she was elected as a professional member of the RSW.

Her work explores the human impact on the fragile balance of our natural environment. Central to her art practice is the experience of walking, observing and building a bank of pictorial references, from which she develops expressive paintings, which deconstruct and regenerate organic forms in a visual simulation of nature in flux.

September 2020

MONDAY	TUESDAY	WEDNESDAY	THURSDAY	FRIDAY	SATURDAY	SUNDAY
31	1	2	3	4	5	6
7	8	9	10	11	12	13
14	15	16	17	18	19	20
21	22	23	24	25	26	27
28	29	30				



Those Easyjet Call Centre Blues



KATE DOWNIE

Kate Downie is a United States-born Scottish artist who works in painting, printmaking and drawing.

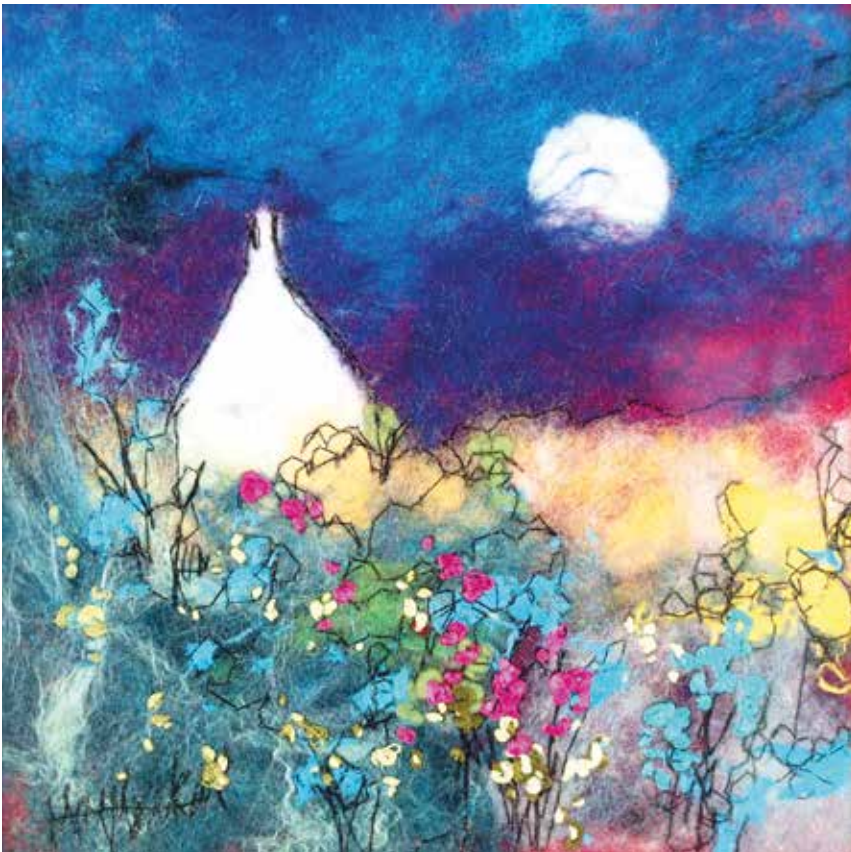
During her career Kate has established studios in places as diverse as a brewery, a maternity hospital, an oil rig and an island underneath the Forth Rail Bridge. She has taught both in art colleges and universities and has directed major public and community art projects.

Kate Downie, lived for a number of years, in North Edinburgh and much of her artwork reflects her time living here. Kate recently worked with young people in North Edinburgh Arts.

www.katedownie.com

October 2020

MONDAY	TUESDAY	WEDNESDAY	THURSDAY	FRIDAY	SATURDAY	SUNDAY
28	29	30	1	2	3	4
5	6	7	8	9	10	11
12	13	14	15	16	17	18
19	20	21	22	23	24	25
26	27	28	29	30	31	



Rising Moon; FELTED MERINO WOOL/MIXED MEDIA ; 18 x18cm



MOY MACKAY

Award winning Edinburgh-born artist, author & gallery owner Moy Mackay graduated from Glasgow University in 1990. She went on to develop her unique felted paintings by combining her love of colour and texture using traditional felting techniques with a fine art application. Moy's work is exhibited in galleries throughout the UK, in private collections worldwide and in her own gallery in Peebles.

www.moymackaygallery.com

November 2020

MONDAY	TUESDAY	WEDNESDAY	THURSDAY	FRIDAY	SATURDAY	SUNDAY
26	27	28	29	30	31	1
2	3	4	5	6	7	8
9	10	11	12	13	14	15
16	17	18	19	20	21	22
23	24	25	26	27	28	29
30						

the washing
hung out to dry -
the spring rain

summer evening -
above the traffic noise,
birdsong

autumn evening -
sign in the shop window:
everything must go

written in the snow
on the car windscreen:
enough

Four haiku poem: Seasons



ALAN SPENCE

Alan Spence is a highly respected poet, playwright, and novelist, who lives in Edinburgh but was born in Glasgow. He taught creative writing at the University of Aberdeen for nearly 20 years, and his writing spans many genres and themes, often falling somewhere between literature and philosophy with poetry inspired by Zen and meditation. His writing covers many forms including haiku and tanka, often in collaboration with artists such as Elizabeth Blackadder and Alison Watt.

Alan is the fifth Edinburgh Makar, the Poet Laureate for Edinburgh, which has been his home for over 40 years.

His play, *Changed Days*, had its world premier (back in the late 80s) in Muirhouse Parish Church Hall.

December 2020

MONDAY	TUESDAY	WEDNESDAY	THURSDAY	FRIDAY	SATURDAY	SUNDAY
30	1	2	3	4	5	6
7	8	9	10	11	12	13
14	15	16	17	18	19	20
21	22	23	24	25 <small>Christmas Day</small>	26	27
28	29	30	31			



**Urban Union have generously sponsored
North Edinburgh 2020 Calendar.**

Urban Union is the housing developer in the area around Pennywell. It is the centre of an exciting 8-year regeneration project as part of the City of Edinburgh Council's 21st Century Homes house-building programme. As well as more than 700 new homes, the regeneration project will help to create new and improved services, transport links, health centres, schooling and local amenities. This in turn will improve training and employment opportunities, as well as other benefits to the community.

To contact Urban Union, e-mail:
pennywellliving@urbanunionltd.co.uk



COVER IMAGE BY ROSS MACRAE:

North Edinburgh Arts mural MacMillan Square

Local Edinburgh artist Ross MacRae is always on the look out for new projects and walls to paint. Working with a wide spectrum of materials Ross has been able to create hundreds of unique pieces of art ranging from intricate pencil drawings to large scale wall murals. He is currently open to commission although often busy so please allow a few weeks notice of any deadlines.

www.rossmacraeart.com ross.macrae@yahoo.com

DESIGN: www.lennondesign.co.uk